

CERTIFIED LAND CORNER RECORDATION

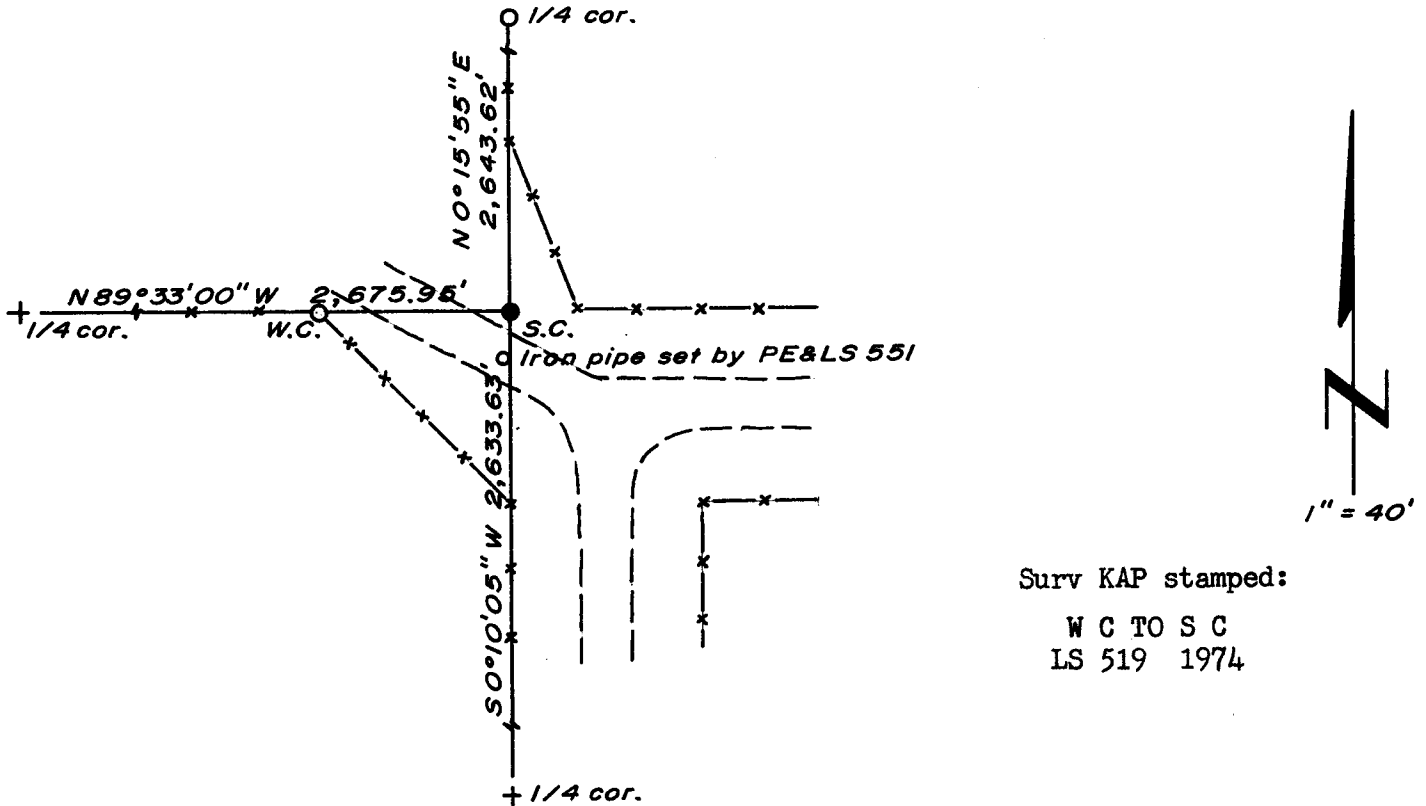
DESCRIPTION OF CORNER EVIDENCE FOUND, AND ORIGINAL RECORD (if known)

LOCATION Found a 3/4" dia. iron tube, possibly a bed post, set flush with ground.
 S.23 S.24 G.L.O. record - Granite Boulder 18 x 10 x 7; John B. Thomas, 1870.
 S.26 S.25 A 3/4" dia. iron pipe, set by Wyoming PE&LS 551, bears S 7°05' W, 9.59
 T.15N., R.67W. feet distant. (Reportedly set by proportionate measurement)
 6th P.M.

DESCRIPTION OF MONUMENT AND ACCESSORIES ESTABLISHED
 TO PERPETUATE THE ORIGINAL LOCATION OF THIS CORNER:

At the corner: Not remonumented.
 Accessories: A 5/8" dia. x 24" long rebar with Surv KAP, set and stamped as a witness corner, bears S 89°33'00" E, 40.00 feet distant.

SKETCH, WITH COURSE AND DISTANCE TO ADJACENT CORNER IF DETERMINED IN THIS SURVEY.
 (May Sketch or Paste Reproduction on Reverse Side.)



Surv KAP stamped:
 W C TO S C
 LS 519 1974

I, R.L. Hudson certify that I have carefully performed or reviewed the work done on the diagrammed corner as reported on this recordation form and approve the same.

R.L. Hudson Wyoming L.S. No. 519
 Signature of Surveyor Registration No.

STATE OF WYOMING,
 Office of Clerk and Recorder,
 County of Saramie

This "corner record" was filed for record on the 24 day of June, 1974, was noted on the cross-index plat and is assigned page No. _____, in book No. _____.

John B. Huismar
 County Official

Cross Index No. <u>T 21</u>	T. <u>15</u>	R. <u>67</u>	<u>6</u> Mer.
_____	T. _____	R. _____	Mer.
_____	T. _____	R. _____	Mer.
_____	T. _____	R. _____	Mer.
_____	T. _____	R. _____	Mer.
_____	T. _____	R. _____	Mer.
_____	T. _____	R. _____	Mer.

Photographed

Indexed

Posted

Assessor

The State of Wyoming }
County of Laramie } SS

This instrument was filed for record
at 12 51 o'clock A M. on the

24 day of June

A. D. 19 24 and duly recorded in
Book _____ on page _____

John B. Williams

County Clerk & Ex-Officio Register of Deeds

By [Signature] Deputy